

ファ
レ

8
8

ふあ
れ



A musical staff with a bass clef. The notes are positioned on the following lines from top to bottom: the first line (F), the second line (C), the third line (G), and the fourth line (D). The notes are labeled with Japanese syllables: 'ソ' (So) on the first line, 'シ' (Shi) on the second line, 'ミ' (Mi) on the third line, and 'メ' (Me) on the fourth line. The syllables 'ソ' and 'シ' are in black, while 'ミ' and 'メ' are in cyan.



A musical staff with a bass clef on the left. A large number '8' is centered on the staff. To the left of the '8' are the Japanese characters 'ラ' (top) and 'ファ' (bottom). To the right of the '8' are the Japanese characters 'ら' (top) and 'ふあ' (bottom). The characters 'ら' and 'ふあ' are colored in a light blue color.



A musical staff with a bass clef. The staff contains two notes: a whole note on the second line (middle C) and a whole note on the first space (F). The note on the second line is labeled with the hiragana character 'し' (sh) in black. The note on the first space is labeled with the hiragana character 'そ' (so) in black. To the right of these notes, the hiragana characters 'し' (sh) and 'そ' (so) are written in blue ink, corresponding to the notes above and below them respectively.



A musical staff with a bass clef. The staff contains two notes: a whole note 'ド' (D) on the second line and a whole note 'ラ' (A) on the first line. The notes are represented by large black circles with stems. The hiragana characters 'ど' and 'ら' are written in blue next to the notes.



A musical staff with five lines. On the left is a large black bass clef. To its right are two dots. Further right are two notes: a quarter note on the second line from the bottom (G) and a half note on the second space from the bottom (A). To the right of these notes are the Japanese characters 'し' (sh) and 'る' (ru) in black, and 'し' (shi) and 'れ' (re) in blue. The blue characters are positioned to the right of the black ones, forming the word 'しるし' (shirushi).



A musical staff with five lines. On the left is a large black bass clef. To its right is a colon (:). Further right are two notes. The first note is a quarter note on the second line from the bottom, with the Japanese character 'み' (mi) written in blue to its right. The second note is a quarter note on the first line from the bottom, with the Japanese character 'と' (to) written in blue to its right.



A musical staff with a bass clef and a colon. The staff contains two notes: a half note 'ファ' (Fa) on the second line and a half note 'レ' (Re) on the second space. To the right, there are two notes: a half note 'ふあ' (Fu-a) on the second line and a half note 'れ' (Re) on the second space. The notes 'ふあ' and 'れ' are written in a light blue color.



A musical staff with five lines. On the left, there is a large black bass clef. To its right are two dots, one above and one below the second line. Further right is a sharp sign (#) on the second line. A double bar line is placed after the sharp sign. To the right of the bar line, the note 'そ' (so) is written in blue on the second line, and the note 'み' (mi) is written in blue on the third line. The rest of the staff is empty.



A musical staff with a bass clef and a colon. The staff contains the following syllables: **ラ** (top line), **ファ** (second line), **ら** (top line), and **ふあ** (second line). There are two large black circles on the staff, one on the top line and one on the second line, positioned between the syllables.



A musical staff with a bass clef. The staff has five horizontal lines. The first line is the top line, and the fifth line is the bottom line. The characters are positioned as follows:

- シ (Shi) is on the top line.
- ソ (So) is on the second line from the top.
- リ (Re) is on the third line from the top.
- ド (Do) is on the bottom line.

The characters are arranged in two rows: the top row contains シ, リ, and ド; the bottom row contains ソ, リ, and ド. The characters リ and ド are in black, while シ and ソ are in blue.

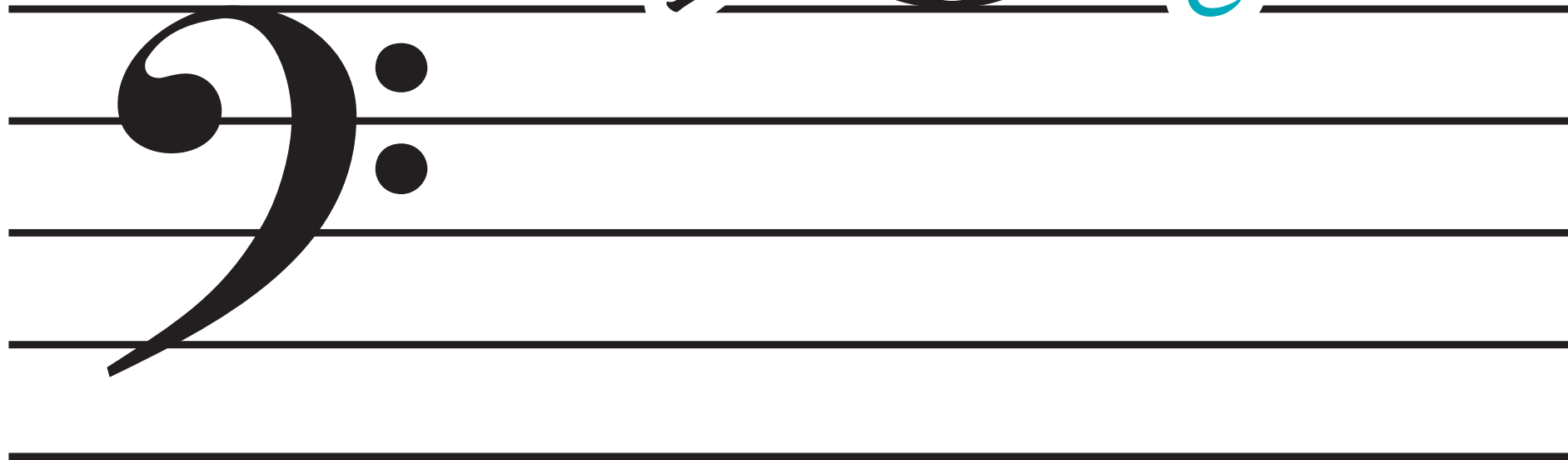


A musical staff with a bass clef. The staff has five lines. The following characters are placed on the staff to identify notes:

- ド (D) is positioned above the top line.
- ラ (A) is positioned on the top line.
- ソ (G) is positioned between the top line and the first space.
- ファ (F) is positioned on the first space.
- ミ (E) is positioned between the first space and the second line.
- レ (D) is positioned on the second line.
- ド (D) is positioned below the second line.



レ シ 8 れ し

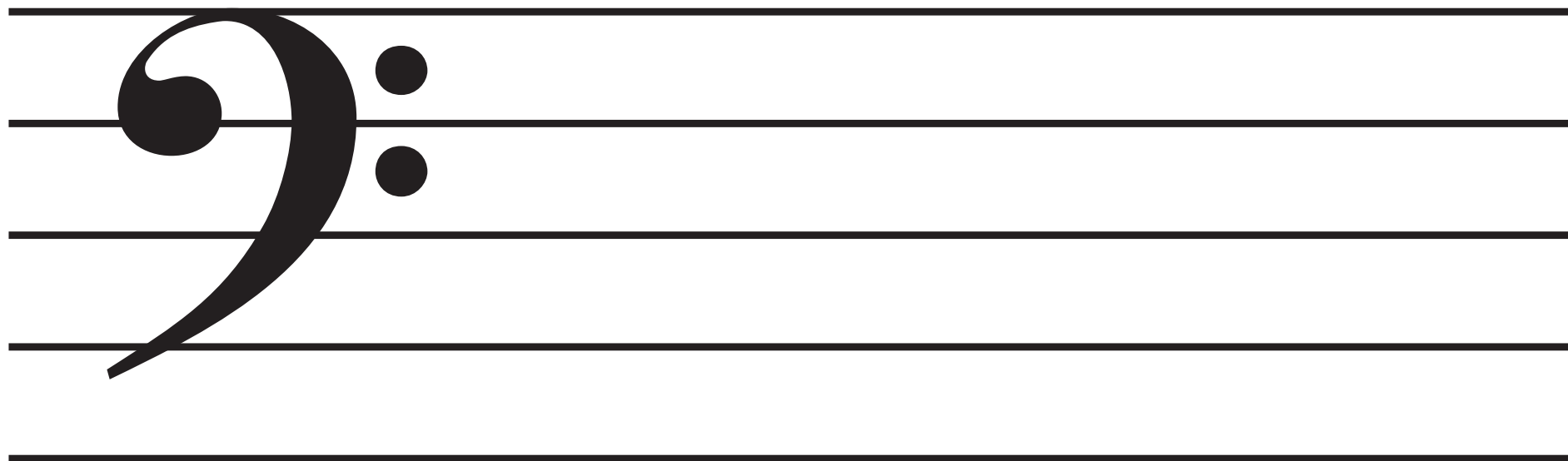




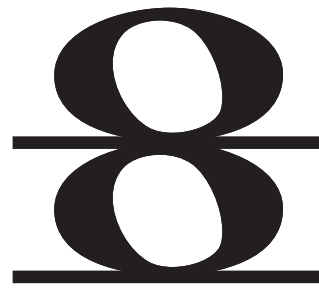
ミ
ド



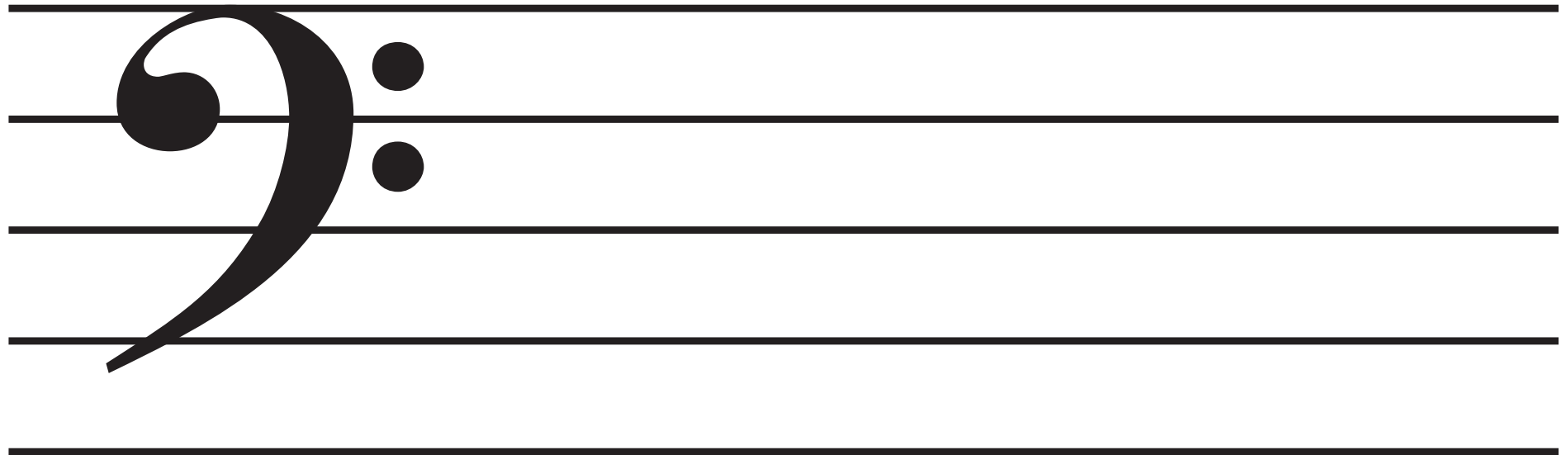
み
ど



ファ
レ

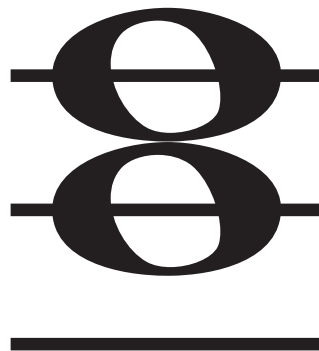


ふあ
れ





ソ
ハ



そ
み

